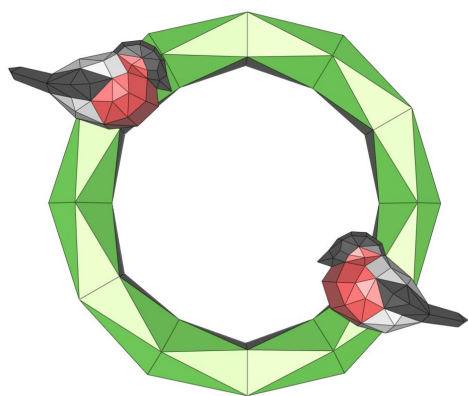


Hello!



Thank you for purchasing the papercraft template from
@sdelano_klinino!

This is a text instruction that will help you assemble your figure
from cardboard.

You'll need:

- **printer** to print the template.
- **cardboard.** To assemble this wreath with bullfinches, you will need 12 A4 sheets:
 - 4 sheets of thick cardboard to assemble the base of the wreath (the diameter of the finished base is 34 cm);
 - 8 sheets of thin paper (density 120 or 180 g/sq.m.): 2 red; 1 black; 1 white; 2 green; 1 light green; 1 dark green.

You can print this template immediately on colored cardboard, or you can print it on ordinary office paper and "transfer" it to cardboard. here is a video of how to do

this: <https://www.instagram.com/p/ByVCjxxl2K3/>

- **scissors or stationery knife.**
- **ruler** (most convenient to use a metal ruler).
- **glue or tape.** You can use them to attach the matching numbered parts together. We recommend using white glue for creativity (for example, Giotto Bricolage or carpenter's PVA glue). Choose a tube of glue with a thin spout or apply the glue to the parts using a small paint brush. Our recommendations you can be found here <https://www.instagram.com/p/Bzp6y59oCKv>
- **surface for cutting** (Something to avoid ruining the surface when cutting, for example, a cutting mat or a piece of plywood).

How to make a wreath?

It consists of 3 elements:

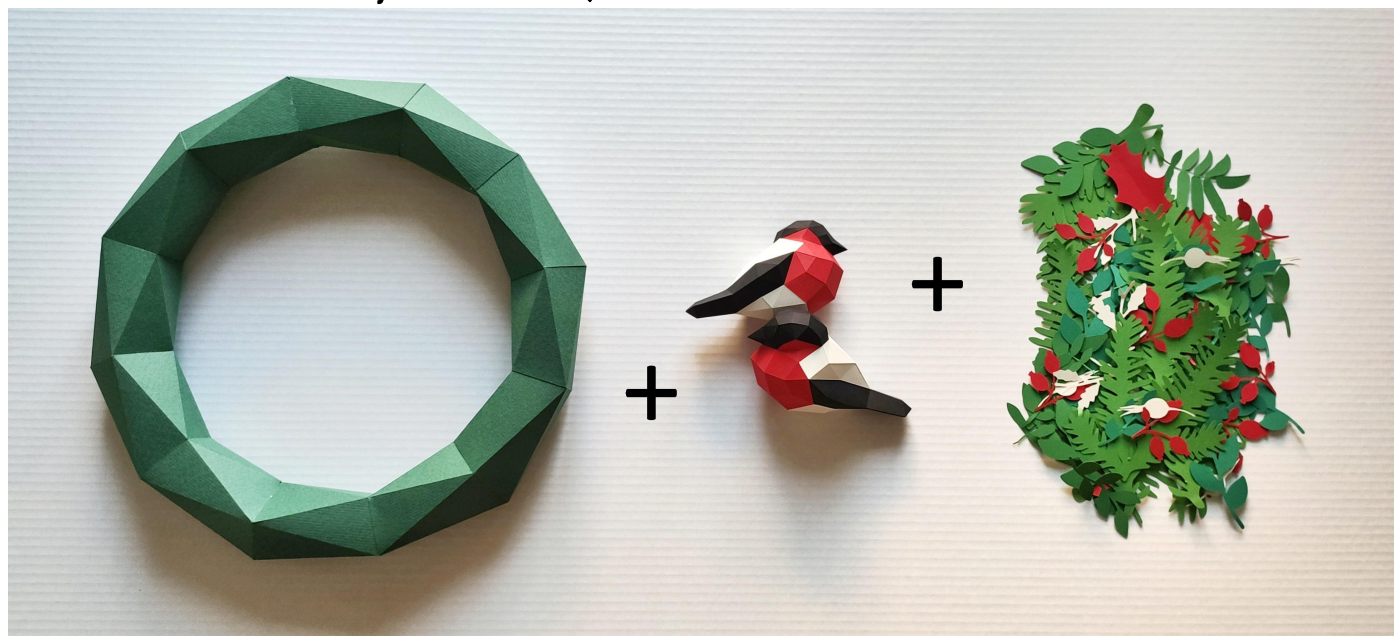
- the base, 2 bullfinches, the back wall of which coincides in shape with the protrusions of the base and flat leaves and berries.

Complexity of the base of the wreath is 2/5 (below average)

Complexity of the Assembly of bullfinches is 5/5 (difficult, there are small details).

(But if you glued our dragonfly or ladybirds, you have already collected figures of such complexity and will definitely cope)

You can collect a wreath with leaves without bullfinches, or use the base separately, adding other decorative elements to it at your discretion :)



Assembly order:

1) **To make base.** Details for assembling the "base" of the wreath are located on page 1-4 of FILE FOR PRINT. The base is glued together from 12 parts (use thick cardboard). when working, keep the step-by-step Assembly instructions in pictures in front of your eyes, this will help you.

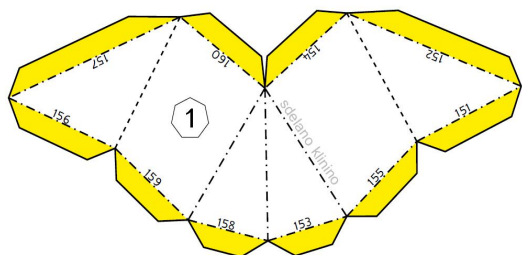
2) **To make bullfinches.** Birds are glued together from thin paper (the most convenient density is 120 g/sq. m.) Details for bullfinch 1 and bullfinch 2 are located on the same sheets to save paper. Elements for bullfinch 1 are indicated by the letters a (a1, a2, etc.) for bullfinch 2-by the letters b (b1, b2, etc.)

3) **Cut out the leaves and berries** and give them volume by bending them a little (you can bend each leaf along the ruler)

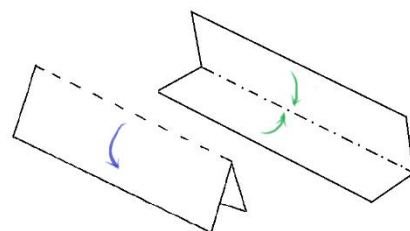


What are these symbols and lines?

What are these symbols and lines? Look at this images:



- solid line is the border of the part. Along this line, we cut with scissors or a stationery knife.;
- dash-dotted line – fold line **ON ITSELF**;
- the dotted line is the fold line **FROM ITSELF**;



- valves are highlighted in yellow for example. This is the part of a detail that is used to glue one detail to the next.

The fold lines must be prepared so that the fold is neat. To do this, swipe them with a thin object. (For example, a non-writing pen, an awl, or the back of a stationery knife). You need to push on the lines, but not cut through. Then bend the cardboard along the lines using a ruler.

And 2 more important points:

- The faces of two parts with the same small numbers are glued together
- All symbols and lines remain inside.



Have a good time!

Maria & Ivan

@sdelano_klinino