

# ROBOT GIRL (Eve)

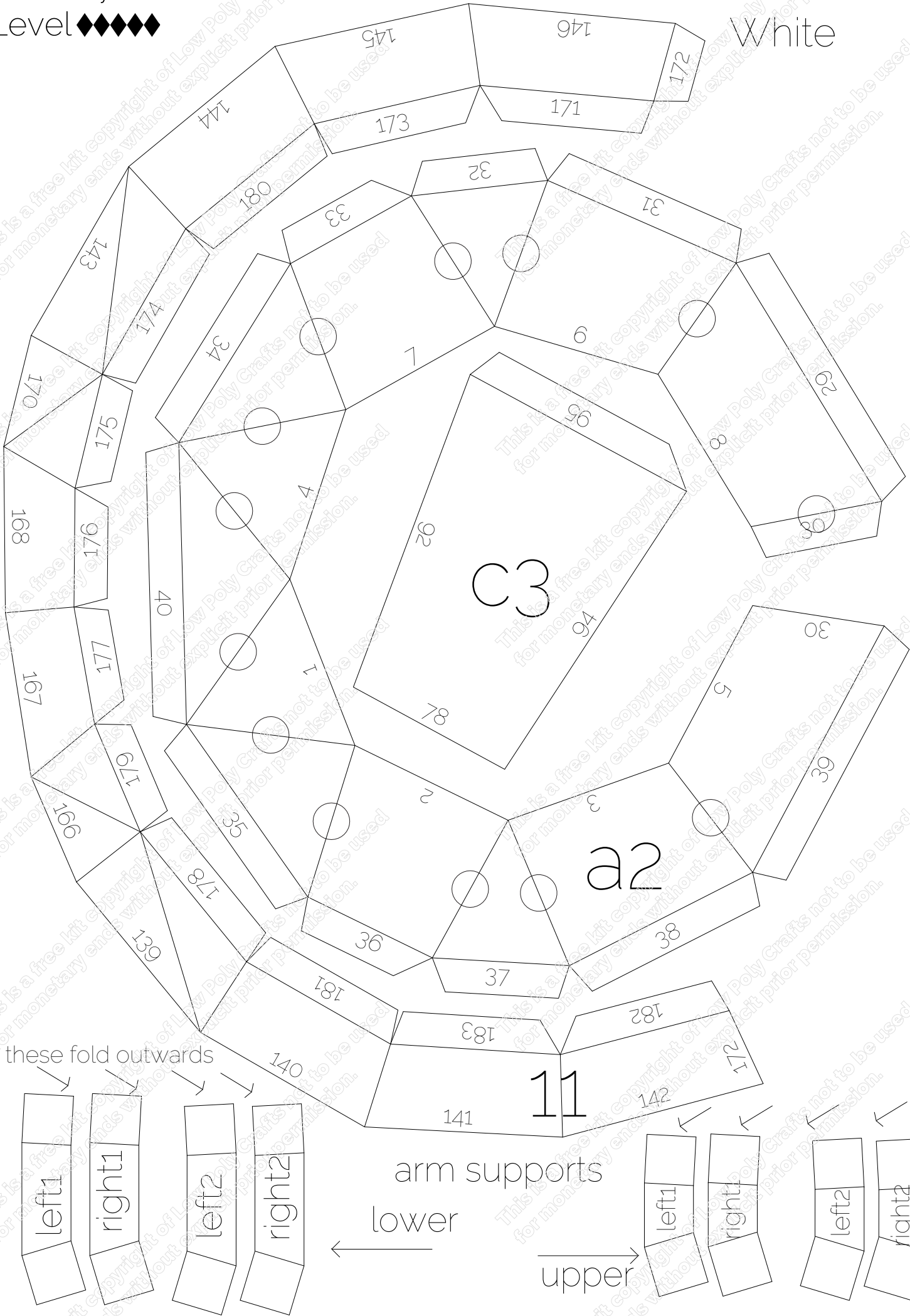


Height: 18 cm/Width: 14 cm/Depth: 30 cm

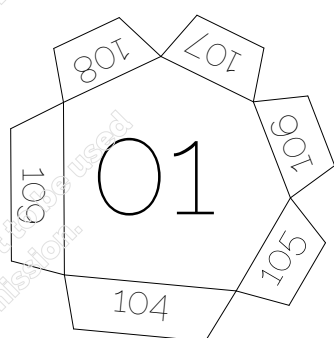
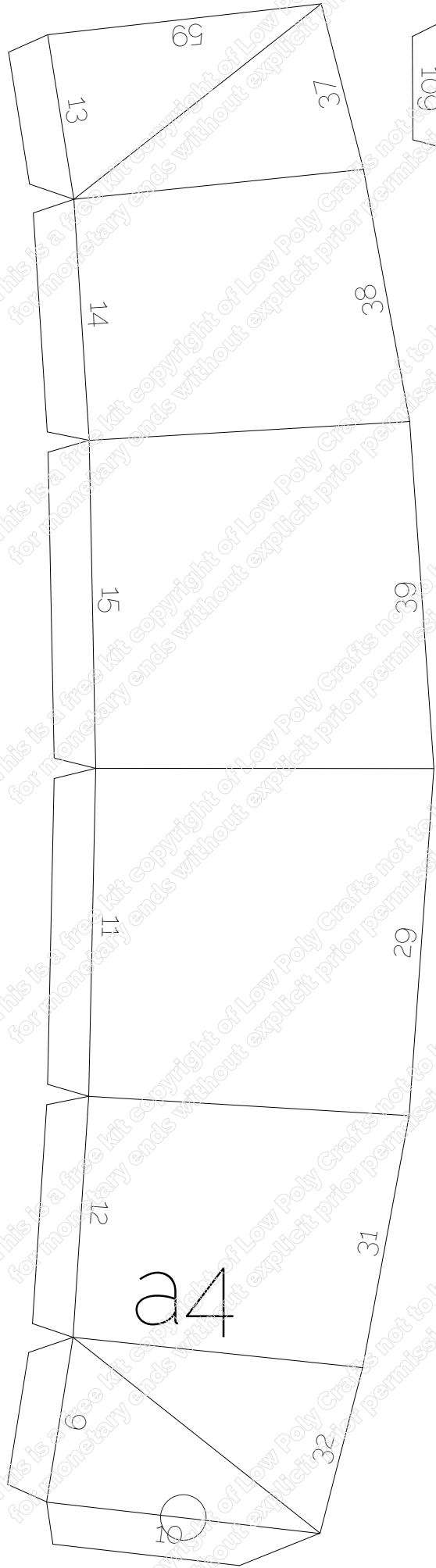
Difficulty  
Level



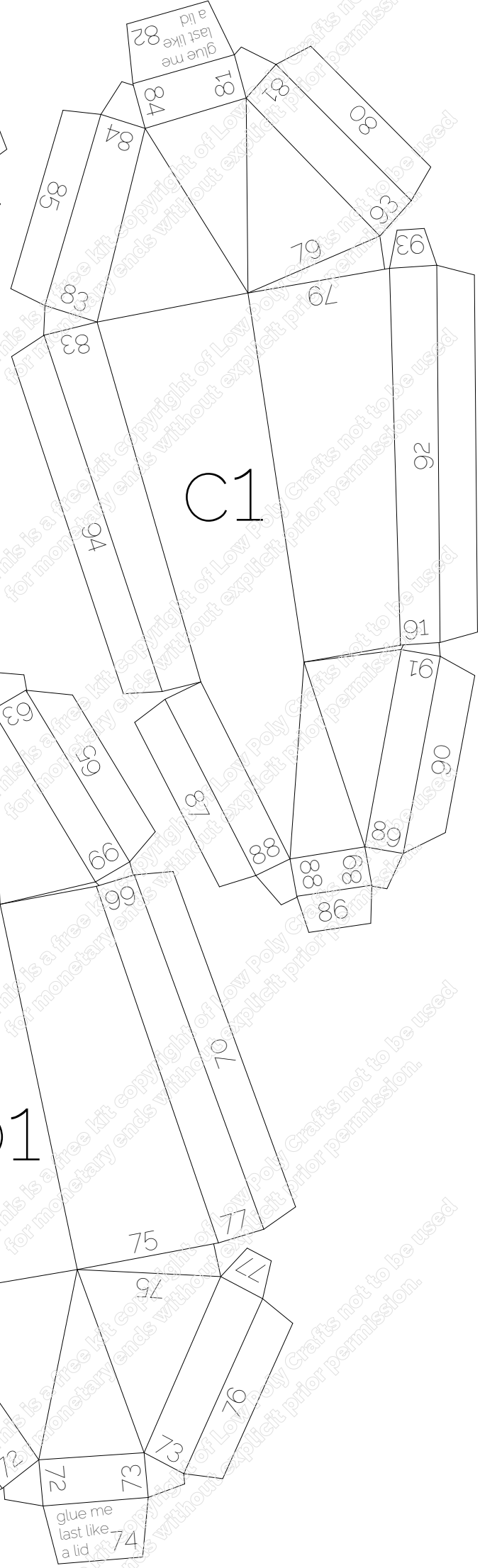
White



[illegible]



White



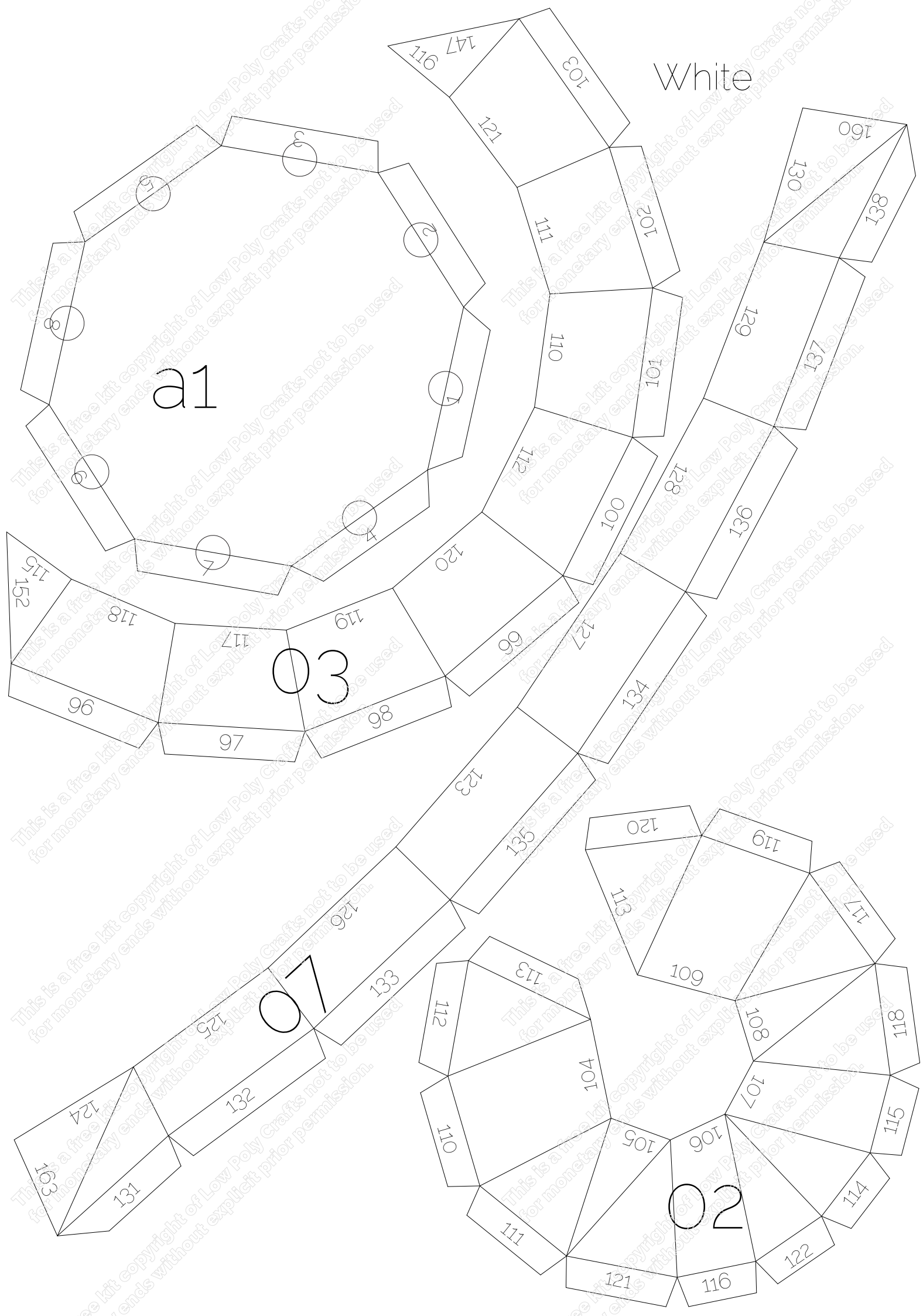


White

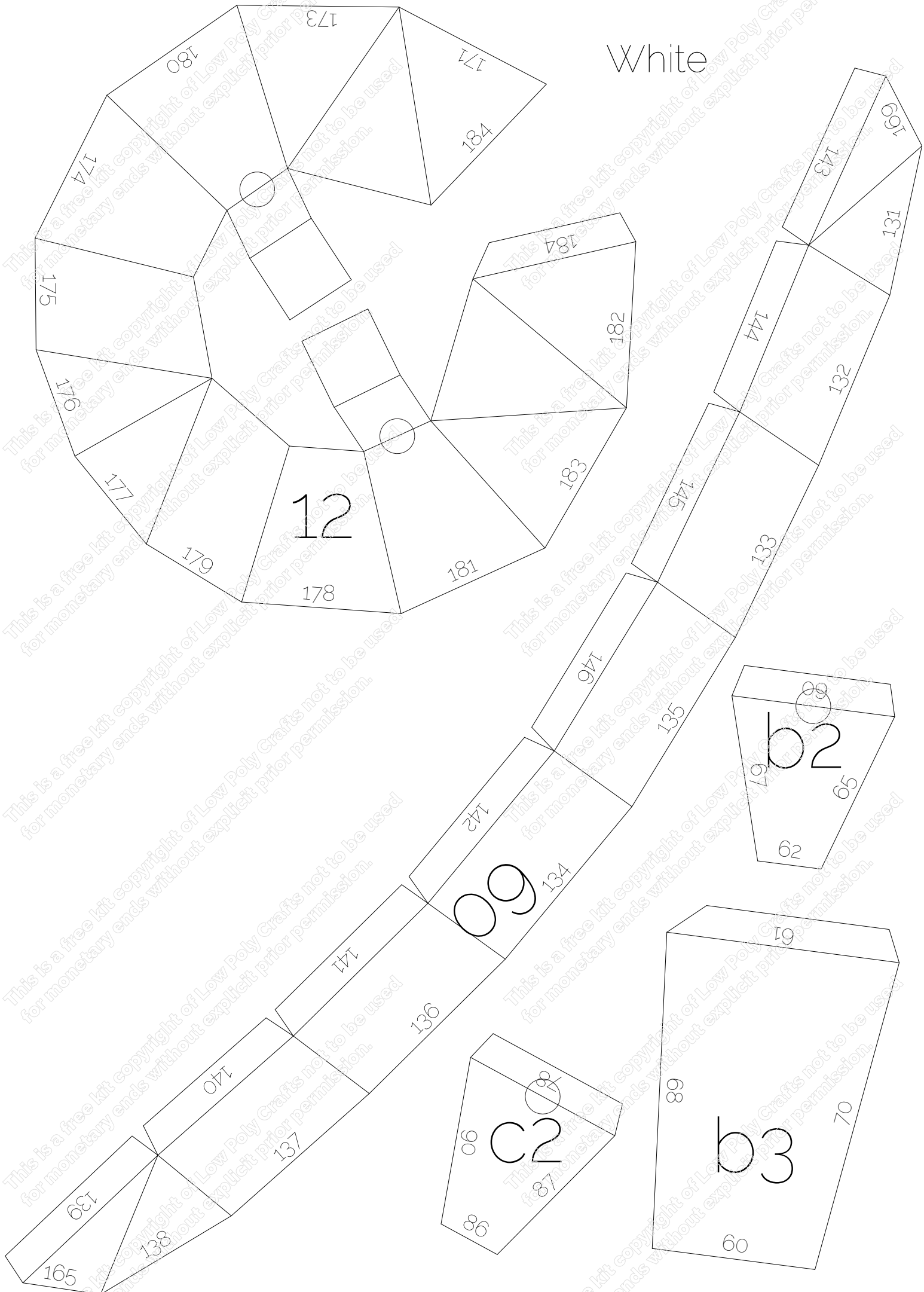
a1

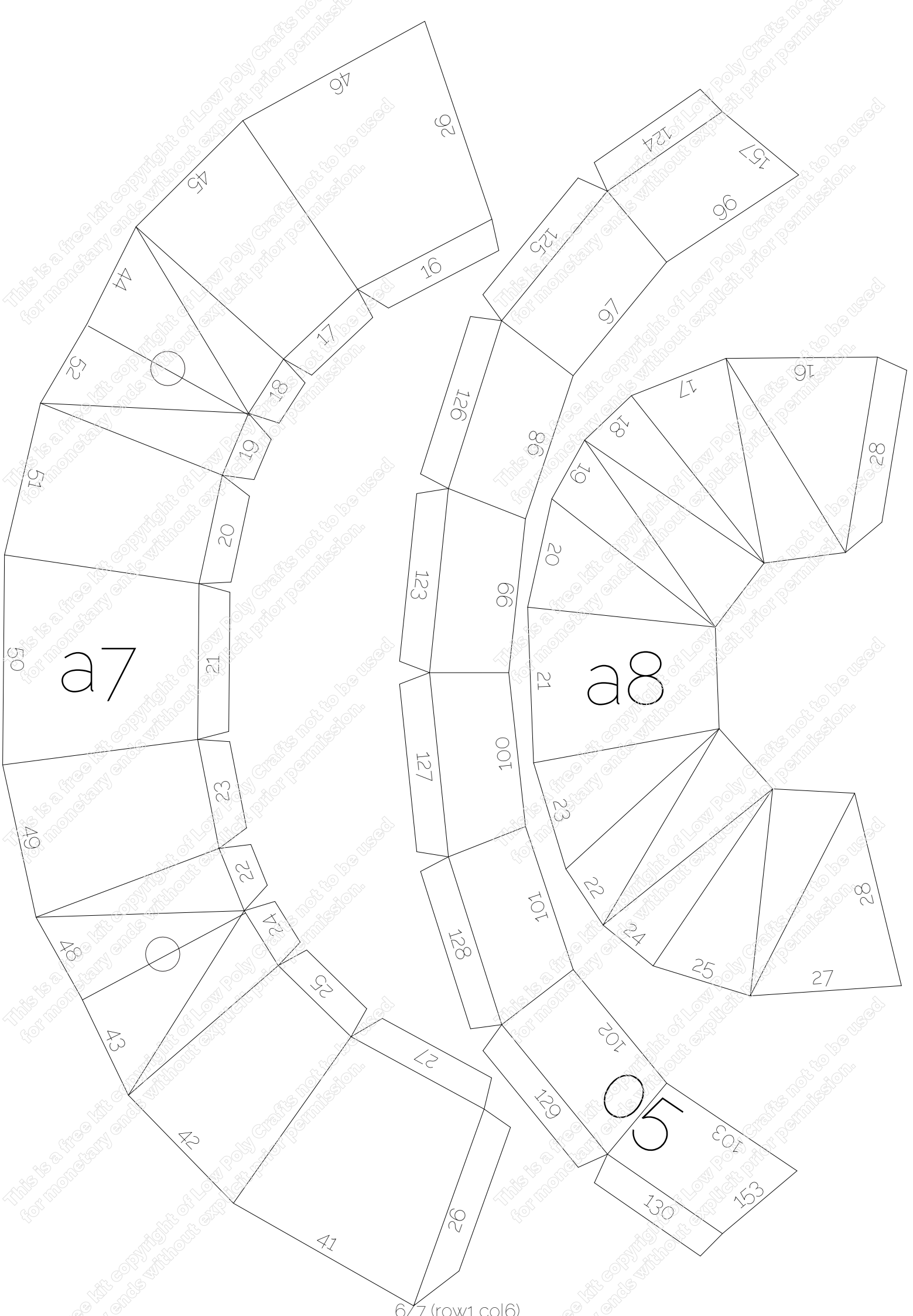
03

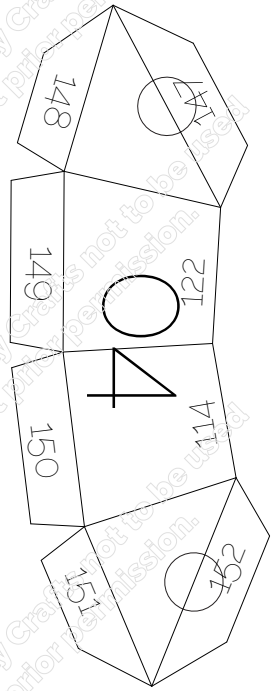
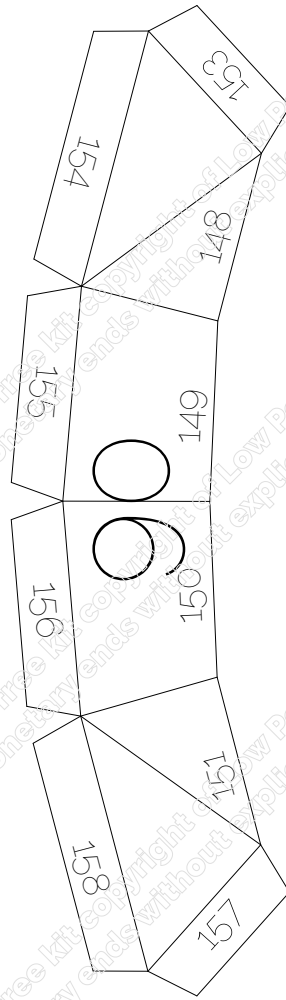
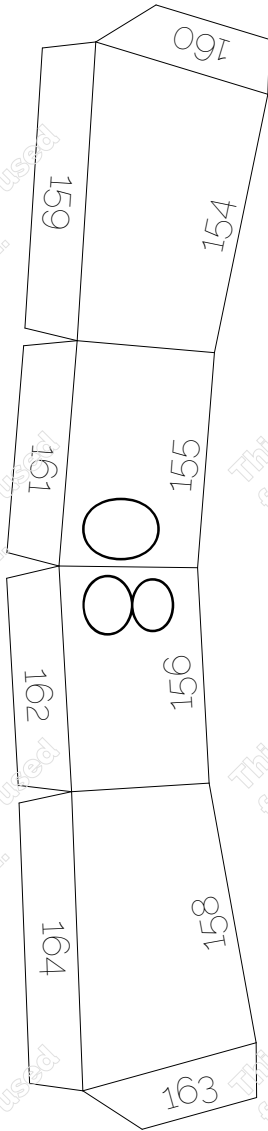
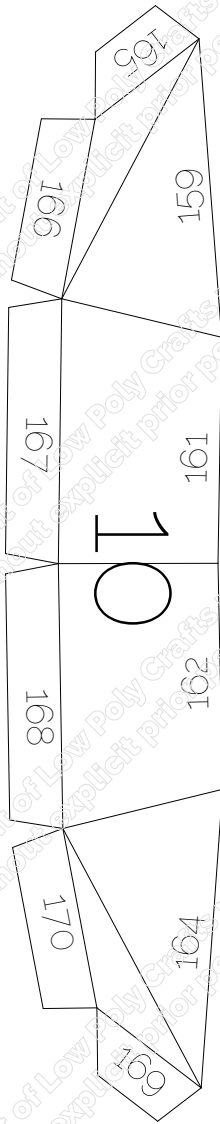
02



White

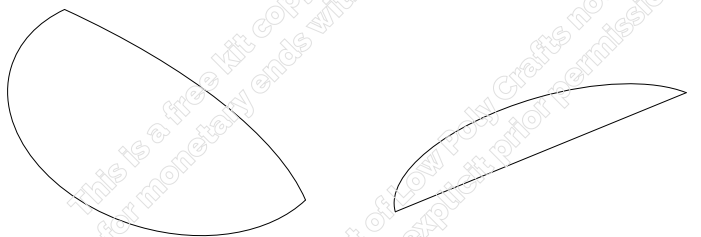
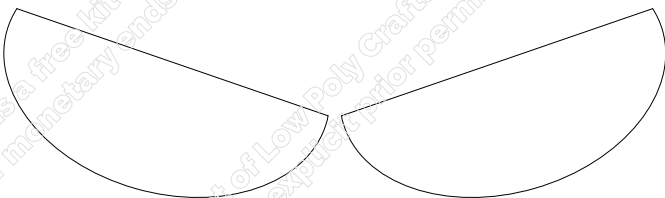
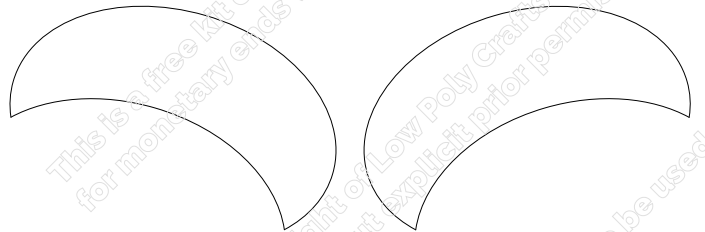
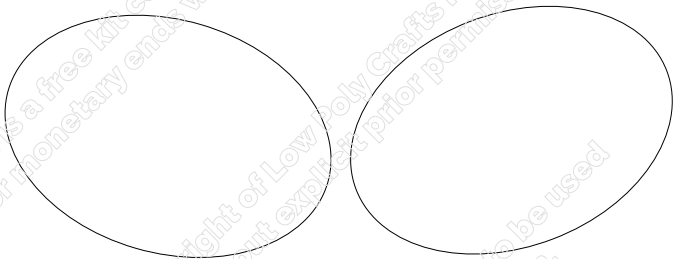
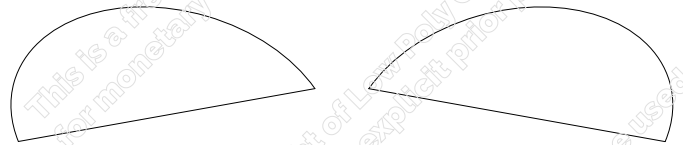
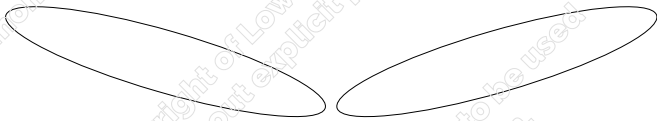






Black

Blue Eyes

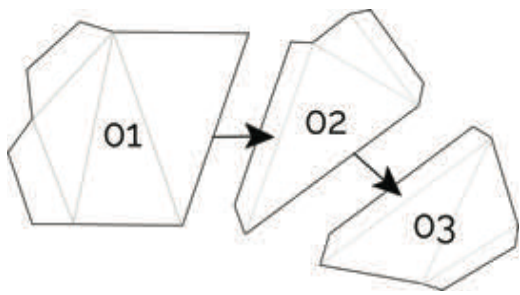




# How to put one together

## 1-Organize your piece

Each piece has a big number on it, typically in the center of the piece. This is its suggested order of build. Start with your "01", and continue with "02" and so on. Please take your time to order them, in a pile, consecutively. Trust us; this will save you a lot of time! :)

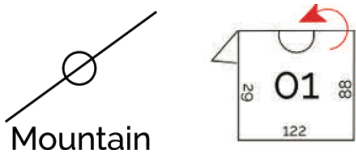


Antlers, tusk, wings, or legs might have to be built separately from the actual (head of an) animal – in this case, the head will be numbered "A01", "A02", while said antlers, tusk, flaps, or legs will be "B01", "B02", etc. and "C01", "C02", etc., respectively. In this case, we advise you build the pieces separately and put them together at the end.

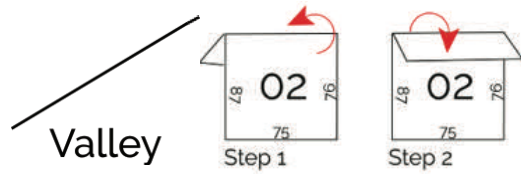
Depending on the build, we might also use an indexing in the form of, for example, "13-1", "13-2", followed by "13-3" and so on. This is to say the piece in question (many times an ear, or flap, or leg) can be built individually and then added to the rest of your build as you go, not needing to wait until the end.

## 2-Folding the paper

We suggest watching the short tutorial on our website before folding your pieces which can be found here – [lowpolycrafts.com/pages/resources](http://lowpolycrafts.com/pages/resources) All the pieces come scored by fine lines and have lines on top of them. This is where you fold. Some have circles on them, most don't. Why the difference, you ask?



Well, if a score line has a pencil line on it with a circle this is called a Mountain fold. Holding the piece in your hand, with the numbers facing towards you, fold the flap away from you (as shown in the figure labeled Mountain fold). Ta da! – Mountain fold complete!

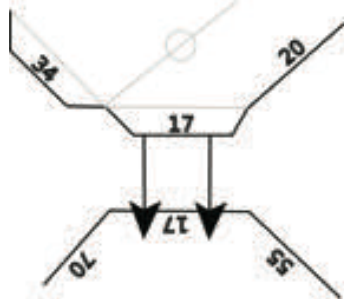


If the score line is just a line, this is called a Valley fold. Again, holding the piece in your hand, numbers facing towards you, fold the flap away from you and then towards you (as show in the figure labelled Valley fold). Voila – Valley fold!

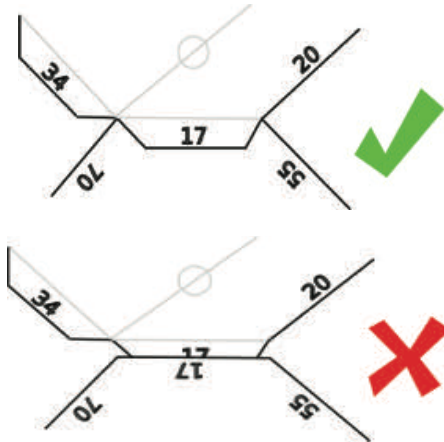
The two step fold system of the Valley fold will give you nice defined fold lines to better create the shape of your craft. Pretty simple, eh?

## 3-Tuck your flaps on the inside of your build

If you're holding piece "01" and "02" you've probably noticed by now there are at least one flap (on one of the pieces) and one edge (on the other piece) with the same number on them.



And you've probably guessed by now too that they glue together too! :) You are correct, they do! Just make sure you glue the flap always on the inside of your build, not on the outside. The numbers on the pieces should be on the inside of your build while the outside should be the plain paper colour.



## Practice Kit

We offer simple practice kits with most of our models. Please do that one first to get the a-b-c out of the way. Learn what too much or too little glue means that way. If you'd like a print-and-cut-at-home kit, visit our webpage to sign up to our Newsletter.

## Take your sweet time. No, really. Just take your time

No need to rush making a piece like this. Take your time to ponder your next and just enjoy yourself. Seriously now, make this fun, not stressful. Stand up regular intervals. Sometimes you might want to spend a minute deciding which flap to glue next when you have 2 or 3 options available. You might wonder what glue to use. That's a tricky one. Not all glues are born equal. You want one that (i) glues fast, (ii) doesn't dry up with a mat finish, in case it should overspill onto the visible sides of your pieces. If you live in Canada or the US, we recommend Aleene's Quick Dry Tacky Glue. And while we are on the topic, we also recommend you use a palette knife to spread your glue, or a simple butter knife.

Have fun and happy DIY-ing! :)

