

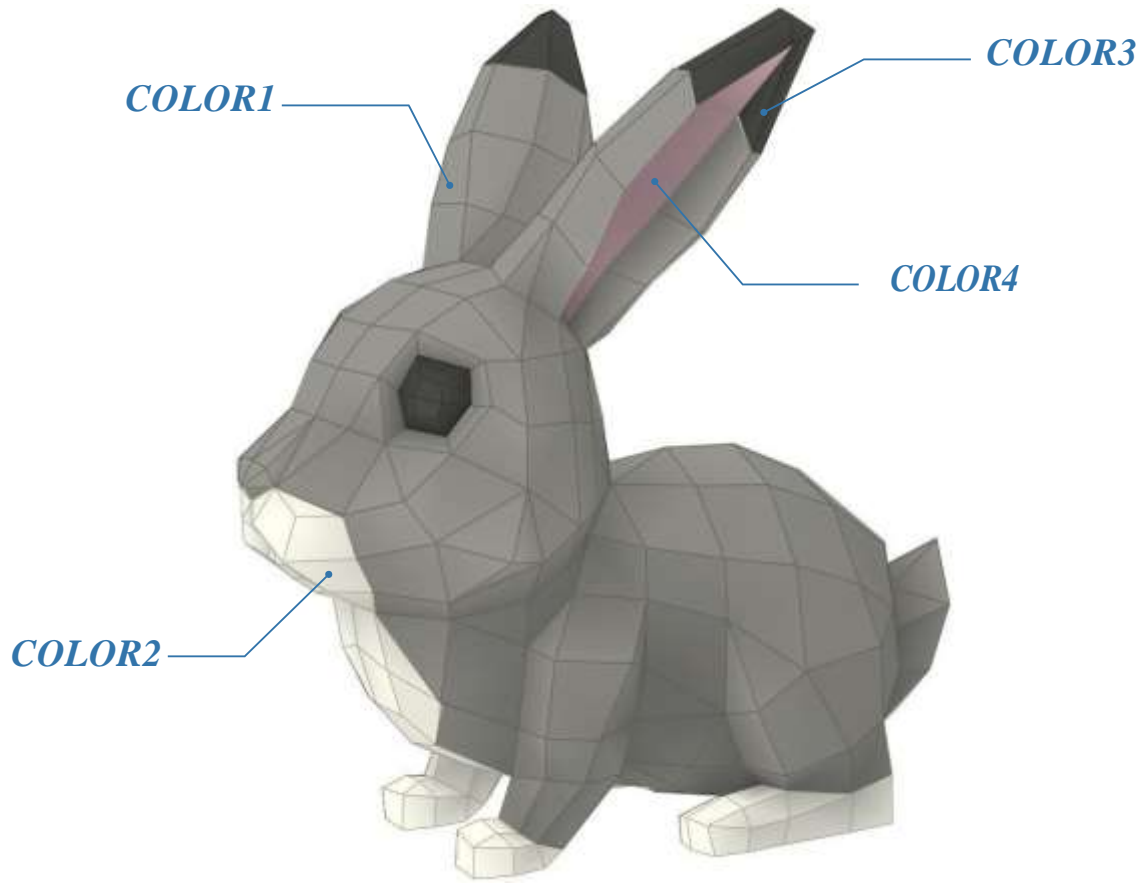


BUNNY

370 x 234 x 359 mm

BUNNY

DIY PAPER SCULPTURE



Make your own Bunny paper sculpture for home decor.

DIY with Instant download PDF template. You can print template on color paper, cut poligonal parts, fold and glue it together.

Dimensions (XYZ) :

37 x 23,4 x 35,9 centimetres / 14,6 x 9,2 x 14,1 inch

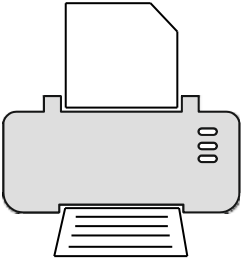
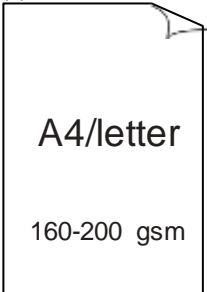
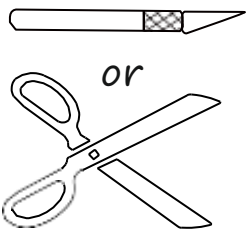
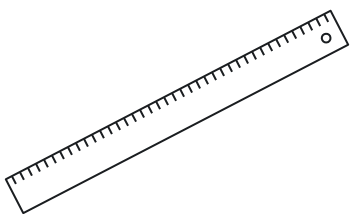
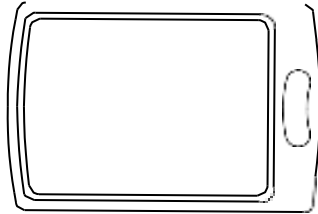
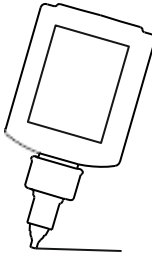
If you want to have another dimensions of model, you will change print scale and size of paper.

Paper: A4/Letter color paper 160-220 gsm / 100-110 lb

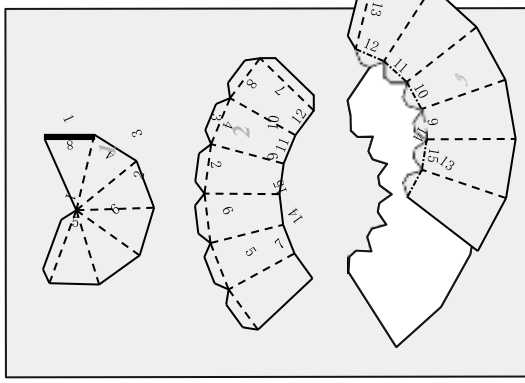
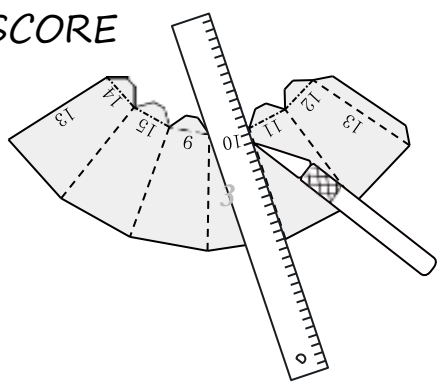
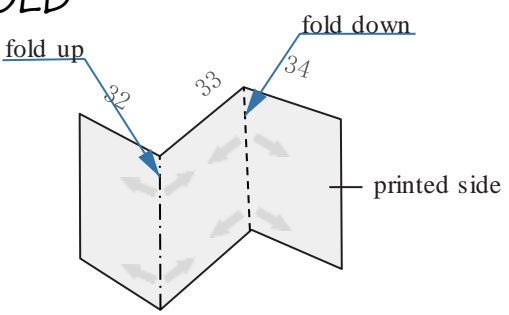
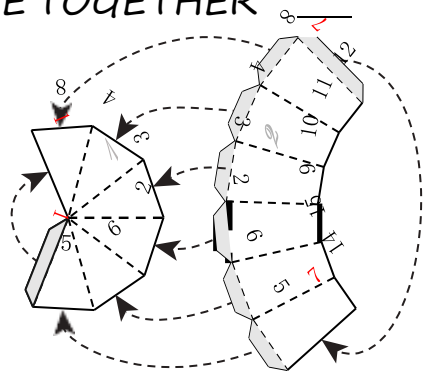
Assembly Scheme: 2 sheets

Template (PDF): 12 sheets (56 parts)

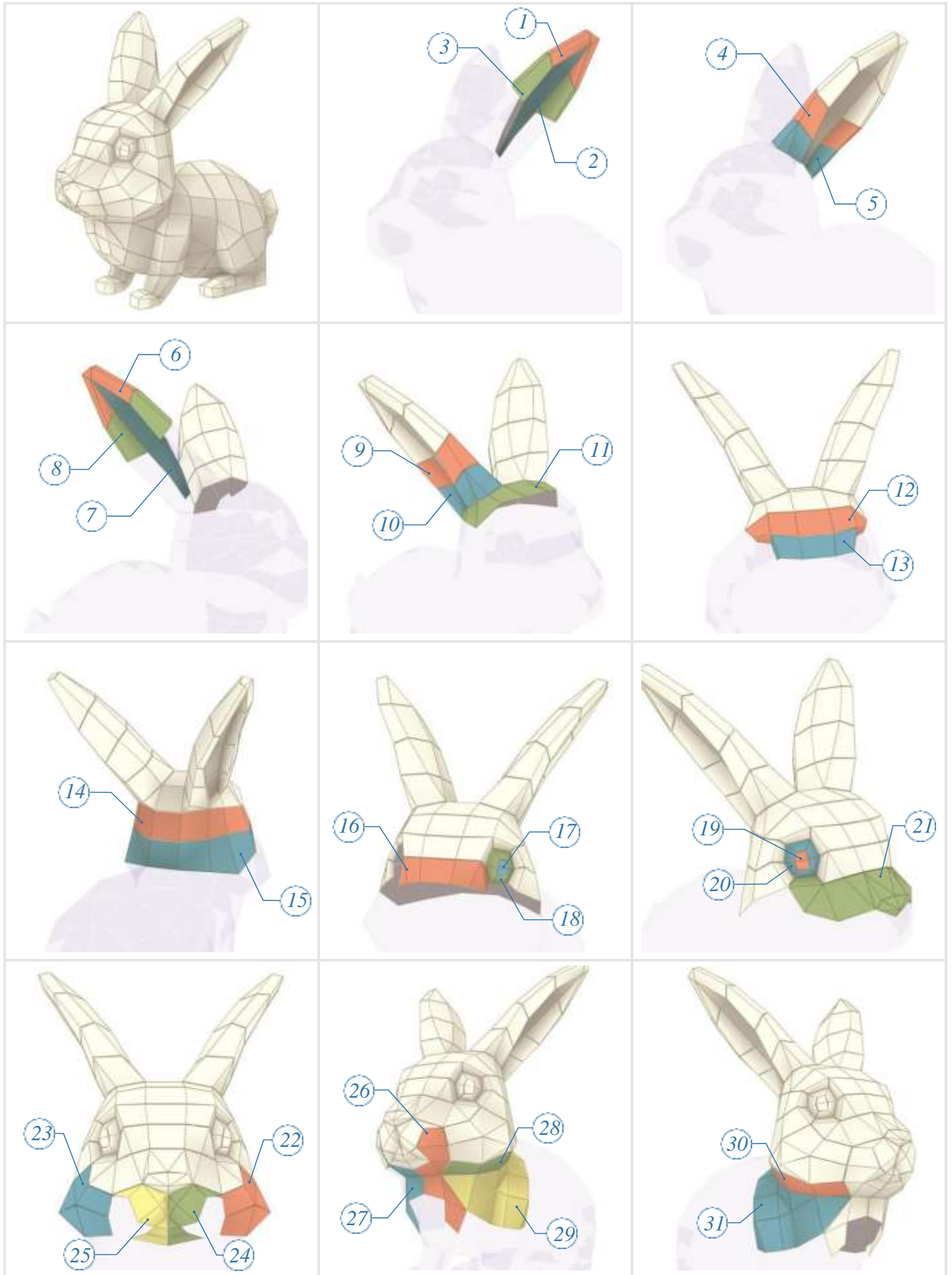
-----EQUIPMENT YOU'LL NEED-----

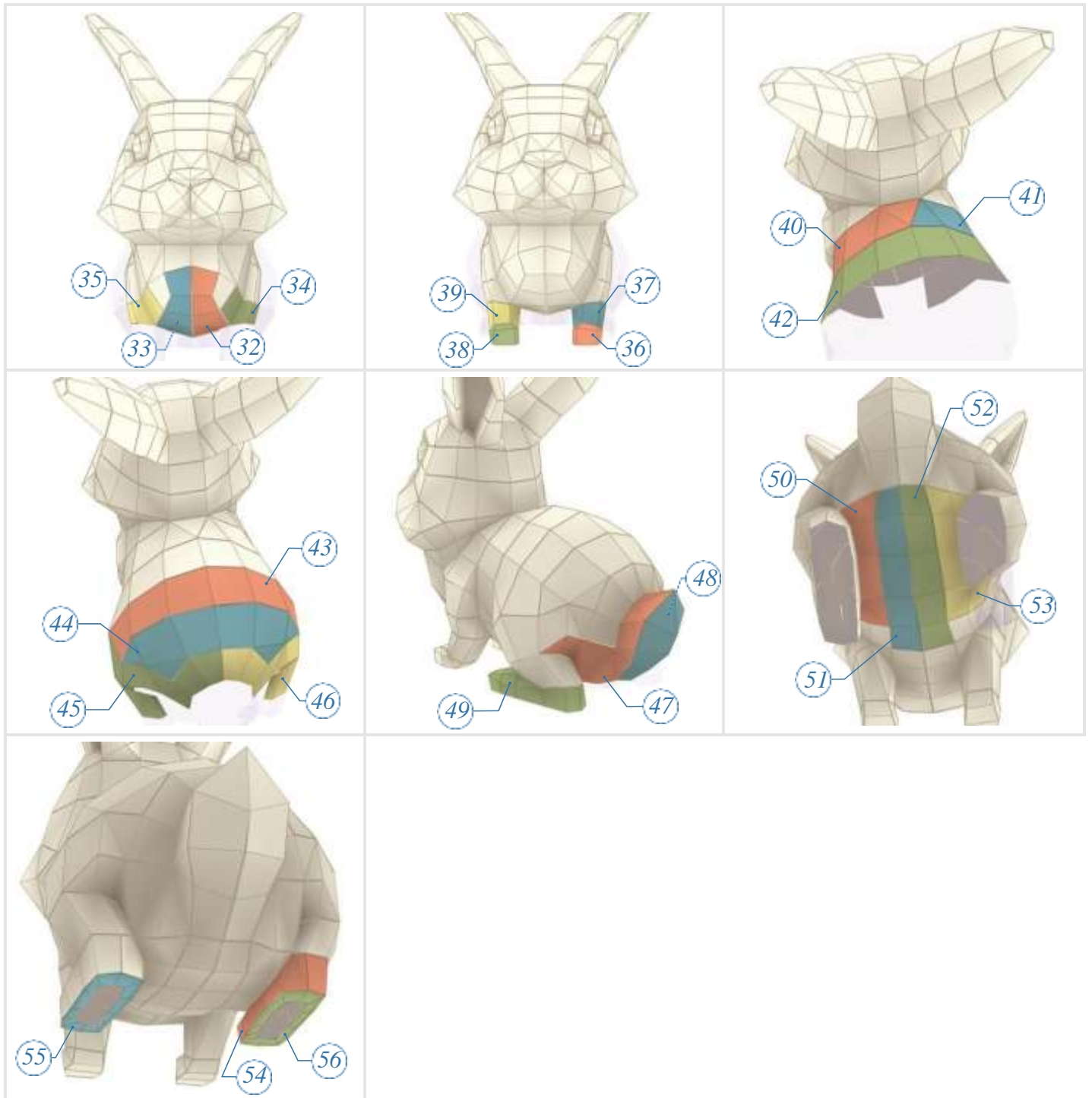
| | | |
|--|---|--|
| <p>1. Printer</p>  | <p>2. PAPER</p>  <p>A4/letter 160-200 gsm</p> | <p>3. Knife or scissors</p>  <p>or</p> |
| <p>4. Ruler</p>  | <p>5. Cutting board</p>  <p>Use with knife</p> | <p>6. Glue</p>  <p>Choose WATER-BASED glue</p> |

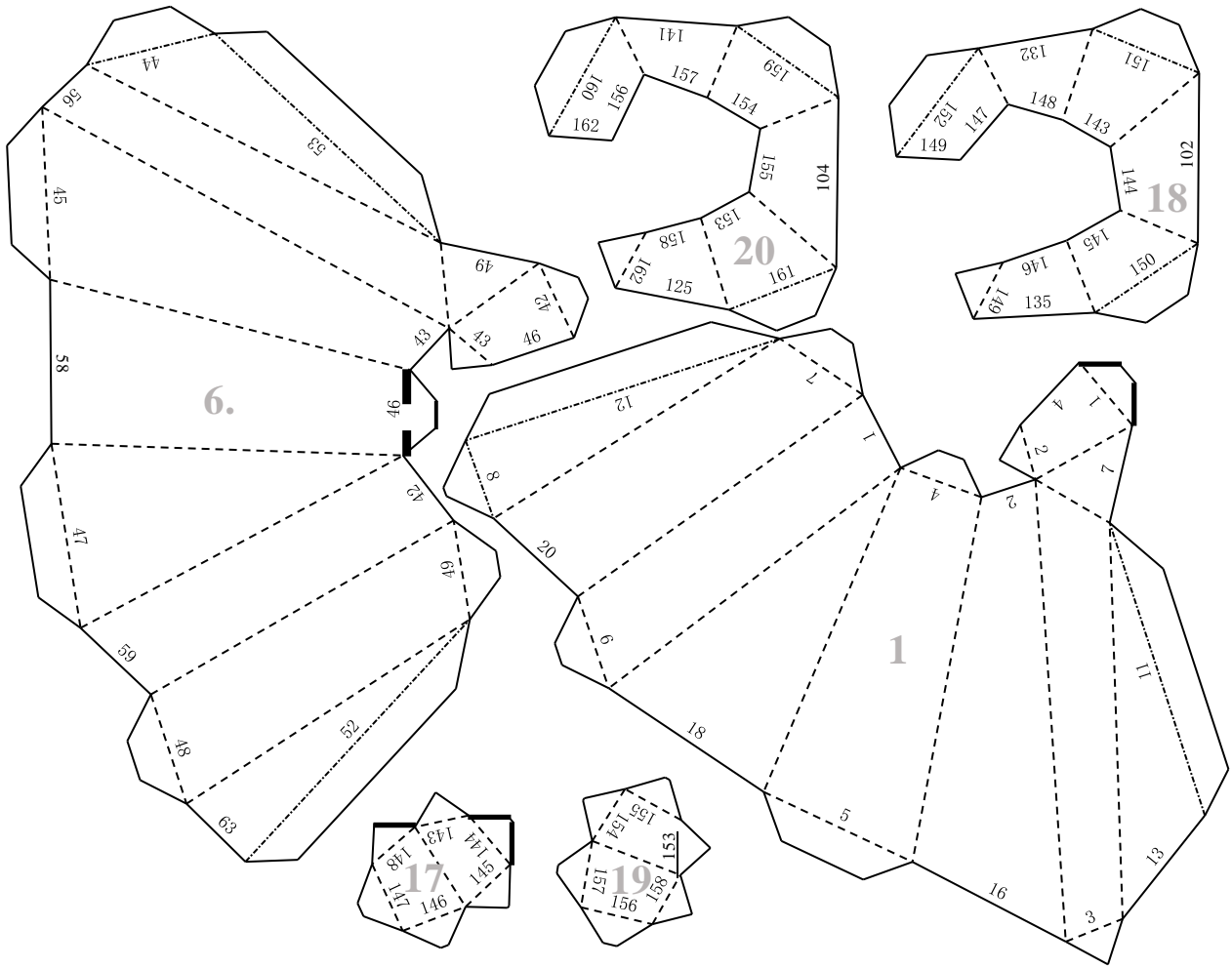
-----THE PRINCIPLE-----

| | |
|--|--|
| <p>1. CUT OFF</p>  | <p>2. SCORE</p>  <p>Use A ruler AND A dried up pen (or back of the knife) to score ALONG the dotted lines</p> |
| <p>3. FOLD</p>  <p>fold up fold down</p> <p>printed side</p> <p>Crease the PAPER ALONG line fold depending on the direction</p> | <p>4. GLUE TOGETHER</p>  |

Bunny: Assembly Instructions







Color details: **COLOR3**

